

Mino eyewear columns feature an elegant and attractive industrial design and are available in a non-locked, key-locked and remote-controlled lockable version. The non-locked rods create a stable positioning of each frame for high volume eyewear presentations.

#### SPECIFICATIONS:

Security: Non-locked  
Material: Anodized aluminium

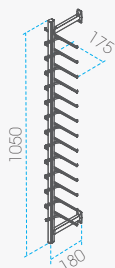
#### UNIQUE FEATURES:

Elegant design language  
Refined integrated lock mechanism  
Slim aluminium body

#### DIMENSIONS:

Advised floor height: 2020mm  
Highest presentation: 1950mm  
Lowest presentation: Varies  
Vertical grid: 70mm  
Horizontal grid: 190mm (advised)

#### VARIATIONS:



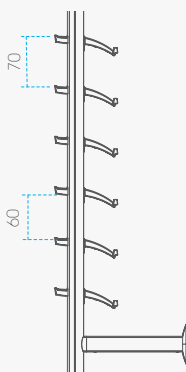
##### MNL 13-S

Capacity: 13 frames  
Weight: 0,57 kg

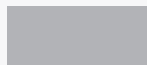


##### MNL 16-S

Capacity: 16 frames  
Weight: 0,71 kg

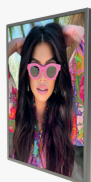


#### AVAILABLE COLOURS



**Aluminium**  
Anodized  
RAL 9006

#### AVAILABLE ACCESSORIES



**50519 (Silver)**  
campaignholder A5



**50527 (Silver)**  
Mirror A5



**50525 (Silver)**  
Logoholder top



**50513 (Silver)**  
Logoholder mid

# MINO

## WALL COLUMNS

### NON-LOCKED



**TOP** | vision  
I N S T O R E

www.topvisiongroup.com  
sales@topvisiongroup.com  
+31 (0)23 517 66 77