

# TOP | vision I N S T O R E

## PRODUCT CATALOGUE





## CONTENT

INSPIRATION 3

### PRODUCT RANGE

CARRÉ STEEL SHELVING UNITS	4
CARRÉ GLASS SHELVING UNITS	6
CARRÉ LOCKABLE COLUMN UNITS - REMOTE CONTROLLED	8
CARRÉ LOCKABLE COLUMN UNITS - KEY LOCKED	10
CARRÉ LOCKABLE SHELVING UNITS	12
CARRÉ MIRROR & STORAGE UNITS	14
L-BODY LOCKABLE SHELVES	16
ALUMINA LOCKABLE COLUMNS - REMOTE CONTROLLED	18
ALUMINA LOCKABLE COLUMNS - KEY LOCKED	20
ALUMINA LOCKABLE COLUMNS - NON LOCKED	22
MINO LOCKABLE COLUMNS - KEY LOCKED	24
MINO LOCKABLE COLUMNS - NON LOCKED	26
BASALT FREESTANDING DISPLAYS	28
BASALT XL FREESTANDING DISPLAYS	30
FRAME HOLDERS - STILO XS	32
FRAME HOLDERS - STILO FD	34
FRAME HOLDERS - STILO 180	36
CARRÉ ISLAND UNITS	38

### CONTACT

CONTACT DETAILS 40

## WHO WE ARE

We are innovative thinkers. We are creators.

We love making beautifully designed industrial products.

We make your glasses shine. Develop the best stage for your eyewear collections.

We listen and translate your dreams into reality.

We believe in inspiring interactions. We value the uniqueness of every person and believe that your store concept should reflect your company values and identity.

Who do you want to be in this world?



## WHAT WE DO

Beautiful eyewear deserves to be shown in the very best way.

When developing products, our focus remains to present eyewear in a clear, secure, and attractive way. But over the years, we've built our knowledge upon the foundations of retailing, interior design, and technological knowledge to **make your frames shine.**

We looked at what features were missing in display solutions that were currently available, and noticed that:

Eyewear designs and colours aren't shown in their true beauty. Traditional eyewear displays are boring and don't link the frame to the brand identity. Designer eyewear deserves a spacious display, but should still be protected from theft. There is no real sustainable and ecological furniture to display eyewear.

We looked for a unique way to solve these issues with our brand new Carré Shelving Units, and created eyewear specific solutions.





The Carré Steel shelving units are the ultimate presentations to express specific brands and allow you to highlight each frame individually using 10 LED lighting modules for each position.

SPECIFICATIONS:

Security: Non-locked  
Material: Steel, coated at 180°C  
Maximum load: 5 kg per shelf  
10 LED lighting modules per frame  
Light intensity: 6100 lux per frame  
Colour temperature: 4000 Kelvin  
200 watt power supply included

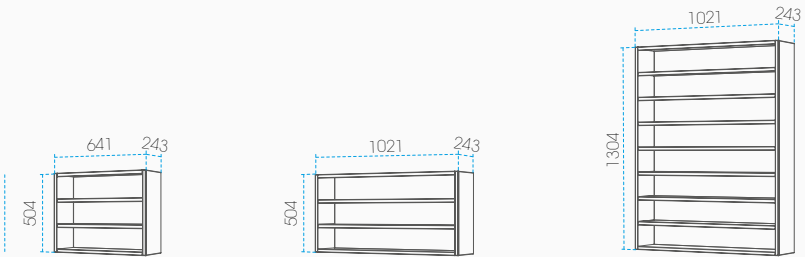
UNIQUE FEATURES:

Full steel construction (98%)  
Durable product  
Eyewear specific light design  
Modular units  
Placed individual or connected

DIMENSIONS:

Advised floor height: 2100mm  
Highest presentation: 1937mm  
Lowest presentation: 816mm  
Vertical grid: 160mm  
Horizontal grid: 190mm

VARIATIONS:



Carré CS.3x3

Shelves: 3  
Capacity: 9 frames  
Weight: 22 kg  
Wattage: 15 watt

Carré CS.3x5

Shelves: 3  
Capacity: 15 frames  
Weight: 28 kg  
Wattage: 37,5 watt

Carré CS.8x5

Shelves: 8  
Capacity: 40 frames  
Weight: 64 kg  
Wattage: 100 watt

AVAILABLE COLOURS

CHASSIS + SHELF COLOURS:

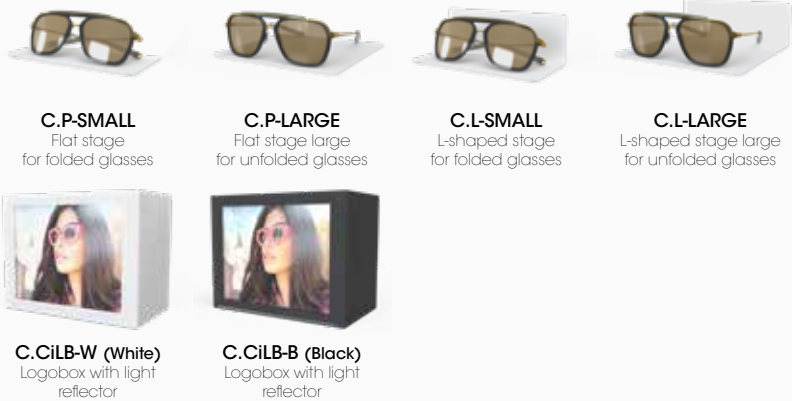
<b>Black</b> Fine structure RAL 9005	<b>Traffic white</b> Matt RAL 9016	<b>Window grey</b> Fine structure RAL 7040	<b>Graphite grey</b> Fine structure RAL 7024	<b>Timeless rust</b> Fine structure

BACKGROUND COLOURS:

<b>Tele grey</b> Fine structure RAL 7047	<b>Traffic white</b> Matt RAL 9016	<b>Grey white</b> Fine structure RAL 9002	<b>Light grey/blue</b> Fine structure

\* Any colour combination is possible

AVAILABLE ACCESSORIES



EASY ASSEMBLY (+/- 30 minutes)



# CARRÉ

## STEEL SHELVING UNITS





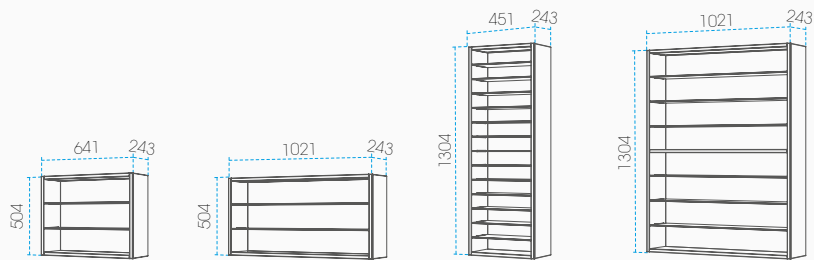


The Carré glass shelving units are transparent shelving systems with a minimalistic look, which pure and clean design emphasizes the focus on your frames. The top panel led-light reduces the cast shadow, to create a clean and calm view on the eyewear.

SPECIFICATIONS:      UNIQUE FEATURES:      DIMENSIONS:

Security: Non-locked Material: Steel, coated at 180°C Maximum load: 5 kg per shelf Light: Top panel light Light intensity: Varies per frame Colour temperature: 4000 Kelvin 200 watt power supply included	Full steel construction (92%) Durable product Modular units Placed individual or connected Extra clear reinforced glass shelves	Advised floor height: 2100mm Highest presentation: 1937mm Lowest presentation: 816mm Vertical grid: 160mm Horizontal grid: 190mm
--	---	--

VARIATIONS:



<b>Carré CG.3x3</b> Shelves: 3 Capacity: 9 frames Weight: 20 kg Wattage: 30 watt	<b>Carré CG.3x5</b> Shelves: 3 Capacity: 15 frames Weight: 26 kg Wattage: 45 watt	<b>Carré CGC.14x2</b> Shelves: 14 Capacity: 24 frames Weight: 34 kg Wattage: 30 watt	<b>Carré CG.8x5</b> Shelves: 8 Capacity: 40 frames Weight: 58 kg Wattage: 90 watt
--	---	--	---

AVAILABLE COLOURS

CHASSIS + SHELF COLOURS:

<b>Black</b> Fine structure RAL 9005	<b>Traffic white</b> Matt RAL 9016	<b>Window grey</b> Fine structure RAL 7040	<b>Graphite grey</b> Fine structure RAL 7024	<b>Timeless rust</b> Fine structure

BACKGROUND COLOURS:

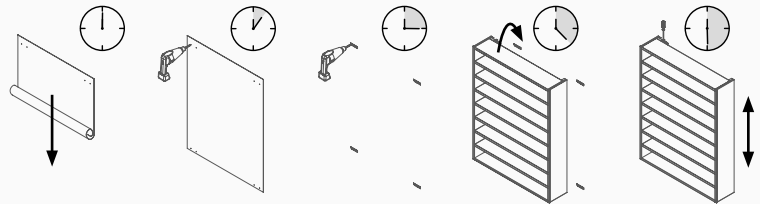
<b>Tele grey</b> Fine structure RAL 7047	<b>Traffic white</b> Matt RAL 9016	<b>Grey white</b> Fine structure RAL 9002	<b>Light grey/blue</b> Fine structure

\* Any colour combination is possible

AVAILABLE ACCESSORIES

<b>C.P-SMALL</b> Flat stage for folded glasses	<b>C.P-LARGE</b> Flat stage for unfolded glasses	<b>C.L-SMALL</b> L-shaped stage for folded glasses	<b>C.L-LARGE</b> L-shaped stage for unfolded glasses

EASY ASSEMBLY (+/- 30 minutes)



**CARRÉ**  
GLASS SHELVING UNITS







The Carré units with vertical lockable eyewear presentations (columns) for your high-end sunglasses, create a high-capacity presentation, illuminated with top panel light encased within the minimalistic Carré design concept. These rods are operated by a remote control with a personal code for swift and comfortable opening and closing .

SPECIFICATIONS:

Security: Remote controlled  
Material: Steel, coated at 180°C  
Light: Top panel light  
Light intensity: Varies per frame  
Colour temperature: 4000 Kelvin  
200 watt power supply included

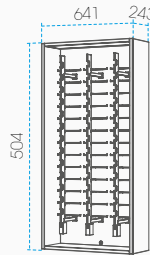
UNIQUE FEATURES:

Full steel construction (98%)  
Durable product  
Modular units  
Placed individual or connected  
Dutch design  
Uni body structure rods  
Interchangeable lock  
Lifecycle: 100.000+ openings

DIMENSIONS:

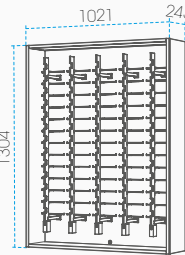
Advised floor height: 2100mm  
Highest presentation: 1947mm  
Lowest presentation: 1023mm  
Vertical grid: 77mm  
Horizontal grid: 190mm

VARIATIONS:



Carré CAR.13x3

Columns: 3  
Capacity: 39 frames  
Weight: 33 kg  
Wattage: 40 watt max.



Carré CAR.13x5

Columns: 5  
Capacity: 65 frames  
Weight: 41 kg  
Wattage: 60 watt max.

AVAILABLE COLOURS

CHASSIS + SHELF COLOURS:



**Black**  
Fine structure  
RAL 9005



**Traffic white**  
Matt  
RAL 9016



**Window grey**  
Fine structure  
RAL 7040



**Graphite grey**  
Fine structure  
RAL 7024



**Timeless rust**  
Fine structure

BACKGROUND COLOURS:



**Tele grey**  
Fine structure  
RAL 7047



**Traffic white**  
Matt  
RAL 9016



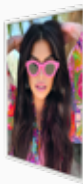
**Grey white**  
Fine structure  
RAL 9002



**Light grey/blue**  
Fine structure

\* Any colour combination is possible

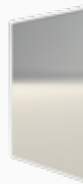
AVAILABLE ACCESSORIES



50692 (White)  
campaignholder A5



50692B (Black)  
campaignholder A5



50693 (White)  
Mirror A5



50693B (Black)  
Mirror A5



50691 (White)  
Logoholder mid



50691B (Black)  
Logoholder mid



50694 (White)  
Logoholder top

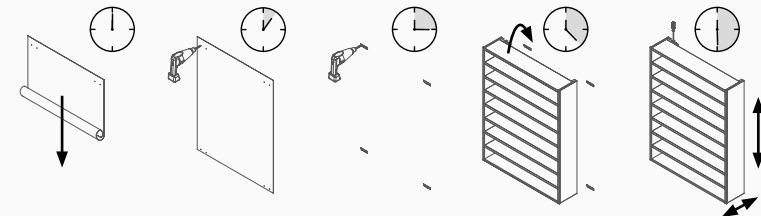


50694B (Black)  
Logoholder top



50801  
Extra remote control

EASY ASSEMBLY (+/- 30 minutes)



# CARRÉ

## LOCKABLE COLUMN UNITS

### REMOTE CONTROLLED







The Carré units with vertical lockable presentations (columns) for your high-end sunglasses, create a high-capacity presentation, illuminated with top panel light encased within the minimalistic Carré design concept. These rods feature a user-friendly and strong key-lock system that opens smoothly .

SPECIFICATIONS:

Security: Key-locked  
Material: Steel, coated at 180°C  
Light: Top panel light  
Light intensity: Varies per frame  
Colour temperature: 4000 Kelvin

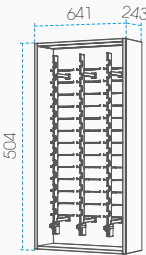
UNIQUE FEATURES:

Full steel construction (98%)  
Durable product  
Modular units  
Placed individual or connected  
Dutch design  
Uni body structure rods  
Interchangeable lock

DIMENSIONS:

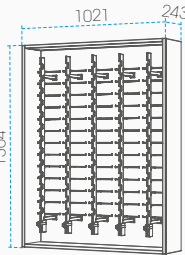
Advised floor height: 2100mm  
Highest presentation: 1947mm  
Lowest presentation: 1023mm  
Vertical grid: 77mm  
Horizontal grid: 190mm

VARIATIONS:



**Carré CAK.13x3**

Columns: 3  
Capacity: 39 frames  
Weight: 33 kg  
Wattage: 30 watt



**Carré CAK.13x5**

Columns: 5  
Capacity: 65 frames  
Weight: 41 kg  
Wattage: 45 watt

AVAILABLE COLOURS

CHASSIS + SHELF COLOURS:



**Black**  
Fine structure  
RAL 9005



**Traffic white**  
Matt  
RAL 9016



**Window grey**  
Fine structure  
RAL 7040



**Graphite grey**  
Fine structure  
RAL 7024



**Timeless rust**  
Fine structure

BACKGROUND COLOURS:



**Tele grey**  
Fine structure  
RAL 7047



**Traffic white**  
Matt  
RAL 9016



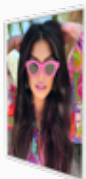
**Grey white**  
Fine structure  
RAL 9002



**Light grey/blue**  
Fine structure

\* Any colour combination is possible

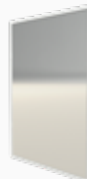
AVAILABLE ACCESSORIES



**50692 (White)**  
campaignholder A5



**50692B (Black)**  
campaignholder A5



**50693 (White)**  
Mirror A5



**50693B (Black)**  
Mirror A5



**50691 (White)**  
Logoholder mid



**50691B (Black)**  
Logoholder mid

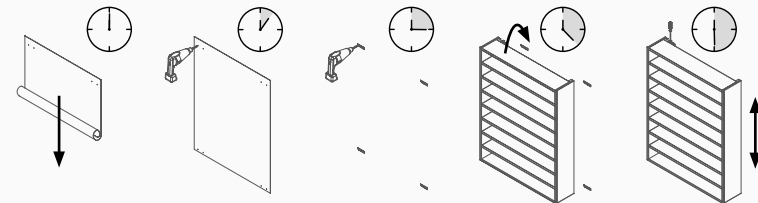


**50694 (White)**  
Logoholder top



**50694B (Black)**  
Logoholder top

EASY ASSEMBLY (+/- 30 minutes)



# CARRÉ

## LOCKABLE COLUMN UNITS

### KEY-LOCKED





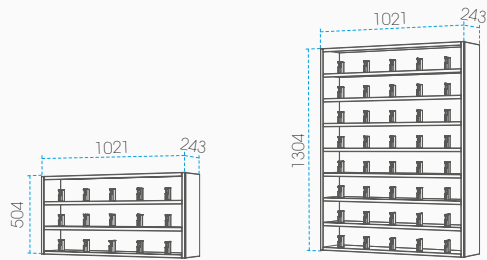


The Carré Steel shelving units are the ultimate presentations to express exclusive brands and allow you to highlight each frame individually using 10 LED lighting modules for each position. These units are operated by a remote control with a personal code for swift and comfortable opening and closing of your eyewear presentations.

SPECIFICATIONS:      UNIQUE FEATURES:      DIMENSIONS:

Security: Remote controlled Material: Aluminium Maximum load: 5 kg per shelf 10 LED lighting modules per frame Light intensity: 6100 lux per frame Colour temperature: 4000 Kelvin 500 watt power supply included	Full steel construction (98%) Durable product Eyewear specific light design Modular units Placed individual or connected	Advised floor height: 2100mm Highest presentation: 1970mm Lowest presentation: 856mm Vertical grid: 160mm Horizontal grid: 190mm
---	--	--

VARIATIONS:



**Carré CSR.3x5**

Shelves: 3  
Capacity: 15 frames  
Weight: 29 kg  
Wattage: 150 watt max.

**Carré CSR.8x5**

Shelves: 3  
Capacity: 40 frames  
Weight: 67 kg  
Wattage: 350 watt max.

AVAILABLE COLOURS

CHASSIS COLOURS:



**Black**  
Fine structure  
RAL 9005



**Traffic white**  
Matt  
RAL 9016

SHELF + LOCKABLE FRAME HOLDER COLOURS:



**Black**  
Fine structure  
RAL 9005



**Traffic white**  
Matt  
RAL 9016

BACKGROUND COLOURS:



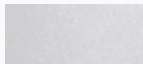
**Tele grey**  
Fine structure  
RAL 7047



**Traffic white**  
Matt  
RAL 9016



**Grey white**  
Fine structure  
RAL 9002



**Light grey/blue**  
Fine structure

\* Any colour combination is possible

AVAILABLE ACCESSORIES



**CN.P-LARGE**  
Flat stage large  
for folded glasses



**CN.CiLB-W (White)**  
Logobox with light  
reflector

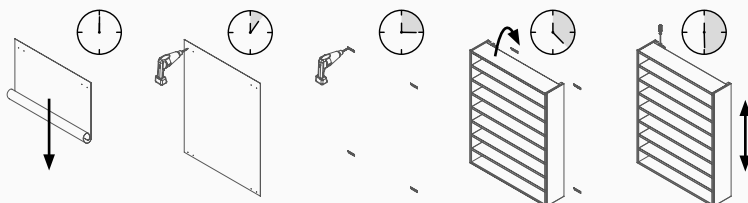


**CN.CiLB-B (Black)**  
Logobox with light  
reflector



**50801**  
Additional  
remote control

EASY ASSEMBLY (+/- 30 minutes)



**CARRE**  
LOCKABLE SHELVING UNITS  
REMOTE CONTROLLED







Combine Carré shelving units with mirror units that can hold additional storage or eyewear cases right next to your collections on display.

SPECIFICATIONS:

Security: Non-locked  
Material: Steel, coated at 180°C  
Acrylic shelves  
Maximum load: 1,2 kg per shelf

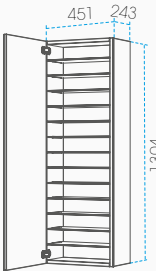
UNIQUE FEATURES:

Full steel construction (92%)  
Durable construction  
Storage near collection  
for quick re-stocking  
Full glass mirror

DIMENSIONS:

Advised floor height: 2100mm  
Highest presentation: 1990mm  
Lowest presentation: 816mm  
Vertical grid: 90mm

VARIATIONS:



Carré CGM.14x2

Shelves: 14  
Capacity: 70 cases  
Weight: 36 kg

AVAILABLE COLOURS

CHASSIS + SHELF COLOURS:



**Black**  
Fine structure  
RAL 9005



**Traffic white**  
Matt  
RAL 9016



**Window grey**  
Fine structure  
RAL 7040



**Graphite grey**  
Fine structure  
RAL 7024



**Timeless rust**  
Fine structure

BACKGROUND COLOURS:



**Tele grey**  
Fine structure  
RAL 7047



**Traffic white**  
Matt  
RAL 9016

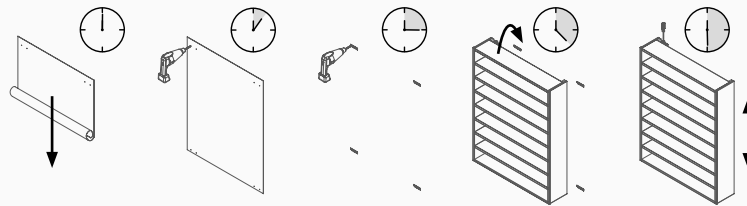


**Grey white**  
Fine structure  
RAL 9002



**Light grey/blue**  
Fine structure

EASY ASSEMBLY (+/- 30 minutes)



# CARRÉ

## MIRROR & STORAGE UNITS







The neutral Carré lockable shelves allow you to create both a clean-lined or playful horizontal grid of eyewear presentations on any flat surface. Present your luxury sunglasses or eye glasses in an orderly manner, both open and closed. Create a playful and spacious spectacle wall with these sleek yet robust wall-shelf eyeglass presentation. Use it nearby the window to attract the passer-by,

SPECIFICATIONS:

Security: Key-locked  
Material: Steel, coated at 180°C

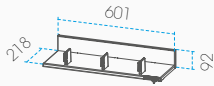
UNIQUE FEATURES:

Horizontal security  
Open and close per shelf  
Optional open presentation  
Solid closing mechanism  
Light reflection due to L-shape  
Easy assembly  
For sunglasses and prescription frames

DIMENSIONS:

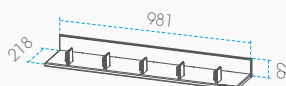
Horizontal grid: 190mm  
Vertical grid (advised): 300mm

VARIATIONS:



**CLB.3.TW**

Capacity: 3 frames  
Weight: 2,5 kg



**CLB.5.TW**

Capacity: 5 frames  
Weight: 3,5 kg

AVAILABLE COLOURS



**Traffic white**  
Matt  
RAL 9016

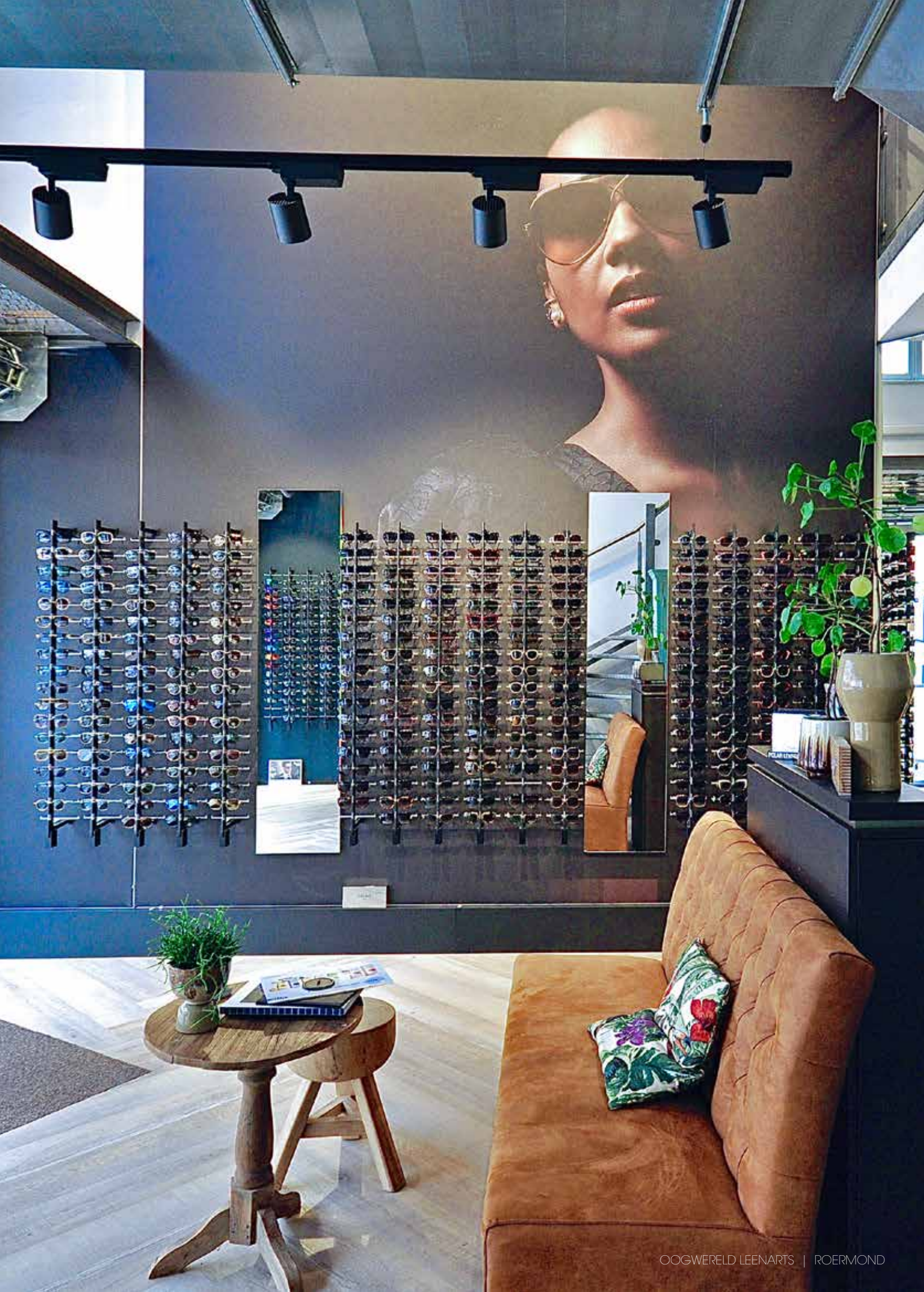
# CARRÉ

## LOCKABLE SHELVES

KEY-LOCKED







Alumina eyewear columns are your go-to option when in need of high-capacity eyewear presentations with seamless integration, and are available in a non-locked, key-locked and remote-controlled lockable version. The remote controlled rods are operated by a remote control with a personal code for swift and comfortable opening and closing.

SPECIFICATIONS:

Security: Remote controlled  
Material: Aluminium rods,  
Soft rubber bridge support  
Rotating wall brackets

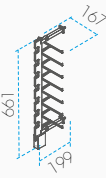
UNIQUE FEATURES:

Dutch design  
Uni body structure  
Security pin disappears when open  
Interchangeable lock  
Low friction mechanism  
Lifecycle: 100.000+ openings

DIMENSIONS:

Advised floor height: 2020mm  
Highest presentation: 1950mm  
Lowest presentation: Varies  
Vertical grid: 77mm  
Horizontal grid: 190mm (advised)

VARIATIONS:



**AR.7R-W (White)**  
**AR.7R-B (Black)**  
Capacity: 7 frames  
Weight: 0,64 kg



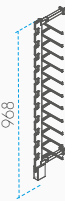
**AR.8R-W (White)**  
**AR.8R-B (Black)**  
Capacity: 8 frames  
Weight: 0,68 kg



**AR.9R-W (White)**  
**AR.9R-B (Black)**  
Capacity: 9 frames  
Weight: 0,72 kg



**AR.10R-W (White)**  
**AR.10R-B (Black)**  
Capacity: 10 frames  
Weight: 0,75 kg



**AR.11R-W (White)**  
**AR.11R-B (Black)**  
Capacity: 11 frames  
Weight: 0,79 kg



**AR.12R-W (White)**  
**AR.12R-B (Black)**  
Capacity: 12 frames  
Weight: 0,83 kg



**AR.13R-W (White)**  
**AR.13R-B (Black)**  
Capacity: 13 frames  
Weight: 0,87 kg



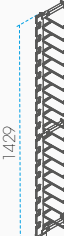
**AR.14R-W (White)**  
**AR.14R-B (Black)**  
Capacity: 14 frames  
Weight: 0,91 kg



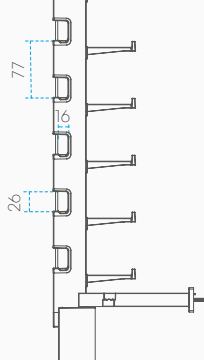
**AR.15R-W (White)**  
**AR.15R-B (Black)**  
Capacity: 15 frames  
Weight: 0,95 kg



**AR.16R-W (White)**  
**AR.16R-B (Black)**  
Capacity: 16 frames  
Weight: 1,13 kg



**AK.17R-W (White)**  
**AK.17R-B (Black)**  
Capacity: 17 frames  
Weight: 1,17 kg



AVAILABLE COLOURS

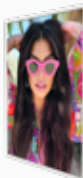


**White**  
Glossy  
RAL 9016



**Black**  
Fine texture  
RAL 9005

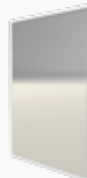
AVAILABLE ACCESSORIES



**50692 (White)**  
campaignholder A5



**50692B (Black)**  
campaignholder A5



**50693 (White)**  
Mirror A5



**50693B (Black)**  
Mirror A5



**50691 (White)**  
Logoholder mid



**50691B (Black)**  
Logoholder mid



**50694 (White)**  
Logoholder top



**50694B (Black)**  
Logoholder top



**50801**  
Extra remote control

# ALUMINA

## WALL COLUMNS

### REMOTE CONTROLLED







Alumina eyewear columns are your go-to option when in need of high-capacity presentations with seamless integration, and are available in a non-locked, key-locked and remote-controlled lockable version. The key-rod rods feature a user-friendly and strong key-lock system that opens smoothly.

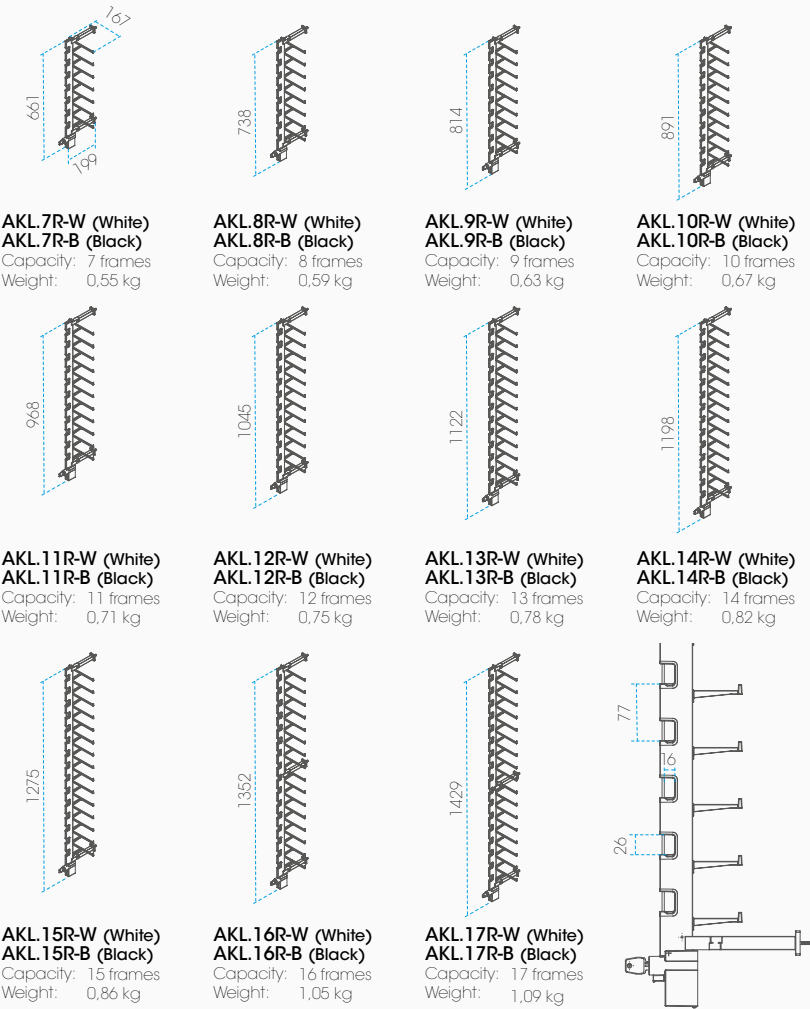
SPECIFICATIONS:      UNIQUE FEATURES:      DIMENSIONS:

Security: Key-locked  
Material: Aluminium rods,  
Soft rubber bridge support  
Rotating wall brackets

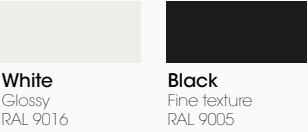
Dutch design  
Uni body structure  
Security pin disappears when open  
Interchangeable lock  
Low friction mechanism

Advised floor height: 2020mm  
Highest presentation: 1950mm  
Lowest presentation: Varies  
Vertical grid: 77mm  
Horizontal grid: 190mm (advised)

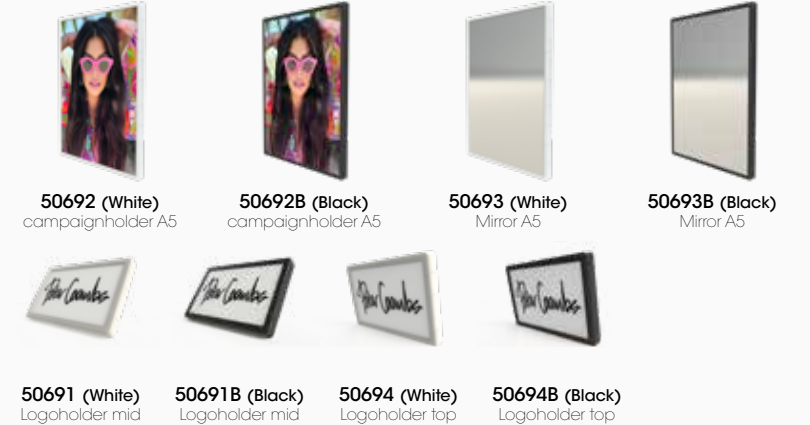
VARIATIONS:



AVAILABLE COLOURS



AVAILABLE ACCESSORIES



# ALUMINA

## WALL COLUMNS

KEY-LOCKED







Alumina eyewear columns are your go-to option when in need of high-capacity presentations with seamless integration, and are available in a non-locked, key-locked and remote-controlled lockable version. The non-locked rods create a stable positioning of each frame for high volume eyewear presentations.

SPECIFICATIONS:

Security: Non-locked  
Material: Aluminium rods,  
Soft rubber bridge support  
Rotating wall brackets

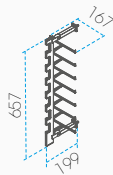
UNIQUE FEATURES:

Dutch architectural design  
Uni body structure

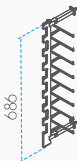
DIMENSIONS:

Advised floor height: 2020mm  
Highest presentation: 1950mm  
Lowest presentation: Varies  
Vertical grid: 77mm  
Horizontal grid: 190mm (advised)

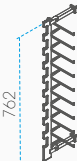
VARIATIONS:



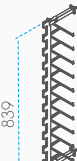
**ANL.7R-W (White)**  
**ANL.7R-B (Black)**  
Capacity: 7 frames  
Weight: 0,43 kg



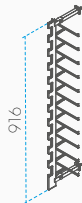
**ANL.8R-W (White)**  
**ANL.8R-B (Black)**  
Capacity: 8 frames  
Weight: 0,46 kg



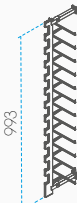
**ANL.9R-W (White)**  
**ANL.9R-B (Black)**  
Capacity: 9 frames  
Weight: 0,49 kg



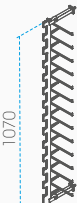
**ANL.10R-W (White)**  
**ANL.10R-B (Black)**  
Capacity: 10 frames  
Weight: 0,52 kg



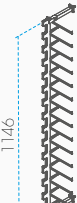
**ANL.11R-W (White)**  
**ANL.11R-B (Black)**  
Capacity: 11 frames  
Weight: 0,55 kg



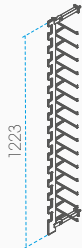
**ANL.12R-W (White)**  
**ANL.12R-B (Black)**  
Capacity: 12 frames  
Weight: 0,58 kg



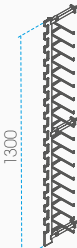
**ANL.13R-W (White)**  
**ANL.13R-B (Black)**  
Capacity: 13 frames  
Weight: 0,61 kg



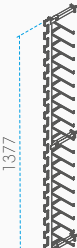
**ANL.14R-W (White)**  
**ANL.14R-B (Black)**  
Capacity: 14 frames  
Weight: 0,64 kg



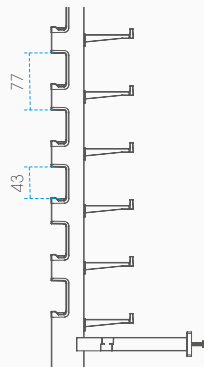
**ANL.15R-W (White)**  
**ANL.15R-B (Black)**  
Capacity: 15 frames  
Weight: 0,67 kg



**ANL.16R-W (White)**  
**ANL.16R-B (Black)**  
Capacity: 16 frames  
Weight: 0,84 kg



**ANL.17R-W (White)**  
**ANL.17R-B (Black)**  
Capacity: 17 frames  
Weight: 0,87 kg



AVAILABLE COLOURS



**White**  
Glossy  
RAL 9016



**Black**  
Fine texture  
RAL 9005

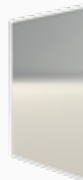
AVAILABLE ACCESSORIES



**50692 (White)**  
campaignholder A5



**50692B (Black)**  
campaignholder A5



**50693 (White)**  
Mirror A5



**50693B (Black)**  
Mirror A5



**50691 (White)**  
Logoholder mid



**50691B (Black)**  
Logoholder mid



**50694 (White)**  
Logoholder top



**50694B (Black)**  
Logoholder top

# ALUMINA

## WALL COLUMNS

### NON-LOCKED







Mino eyewear columns feature an elegant and attractive industrial design and are available in a non-locked, key-locked and remote-controlled lockable version. The key-locked rods feature a slim designed locking mechanism with soft opening when turning the key.

#### SPECIFICATIONS:

Security: Key-Locked  
Material: Anodized aluminium

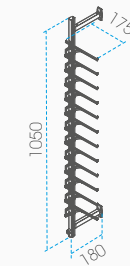
#### UNIQUE FEATURES:

Elegant design language  
Refined integrated lock mechanism  
Slim aluminium body

#### DIMENSIONS:

Advised floor height: 2020mm  
Highest presentation: 1950mm  
Lowest presentation: Varies  
Vertical grid: 70mm  
Horizontal grid: 190mm (advised)

#### VARIATIONS:



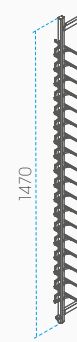
##### MKL12-S

Capacity: 12 frames  
Weight: 0,74 kg



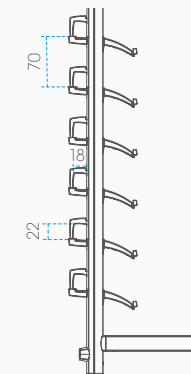
##### MKL15-S

Capacity: 15 frames  
Weight: 0,86 kg



##### MKL18-S

Capacity: 18 frames  
Weight: 0,99 kg



#### AVAILABLE COLOURS



**Aluminium**  
Anodized  
RAL 9006

#### AVAILABLE ACCESSORIES



**50519 (Silver)**  
campaignholder A5



**50527 (Silver)**  
Mirror A5



**50525 (Silver)**  
Logoholder top



**50513 (Silver)**  
Logoholder mid

# MINO

## WALL COLUMNS

### KEY-LOCKED







YEWEAR

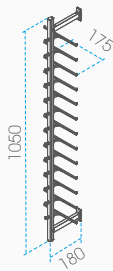


Mino eyewear columns feature an elegant and attractive industrial design and are available in a non-locked, key-locked and remote-controlled lockable version. The non-locked rods create a stable positioning of each frame for high volume eyewear presentations.

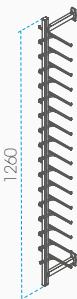
SPECIFICATIONS:      UNIQUE FEATURES:      DIMENSIONS:

Security: Non-locked Material: Anodized aluminium	Elegant design language Refined integrated lock mechanism Slim aluminium body	Advised floor height: 2020mm Highest presentation: 1950mm Lowest presentation: Varies Vertical grid: 70mm Horizontal grid: 190mm (advised)
--	---	--

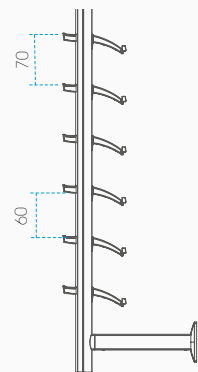
VARIATIONS:



**MNL.13-S**  
Capacity: 13 frames  
Weight: 0,57 kg



**MNL.16-S**  
Capacity: 16 frames  
Weight: 0,71 kg



AVAILABLE COLOURS



**Aluminium**  
Anodized  
RAL 9006

AVAILABLE ACCESSORIES



**50519 (Silver)**  
campaignholder A5



**50527 (Silver)**  
Mirror A5



**50525 (Silver)**  
Logoholder top



**50513 (Silver)**  
Logoholder mid

# MINO

WALL COLUMNS

NON-LOCKED





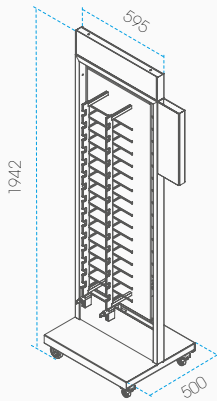


The Basalt is a double-sided freestanding display with a modern industrial look for high-traffic locations. Its satanized semi-transparent back panel ensures limited drop-shadow and features a rotation system that allows users to see both sides of the unit, which automatically returns to a neutral position. Its sturdy base is equipped with a smart leveling system to ensure an upright display even on an uneven or slanted floor.

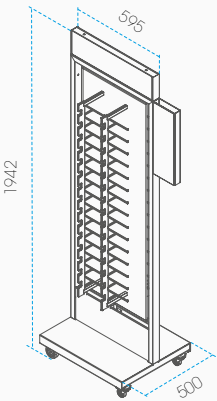
SPECIFICATIONS:      UNIQUE FEATURES:      DIMENSIONS:

Security: Non- or Key-locked Material: Steel chassis and base Aluminium rods, oak shields, acrylic back panel, glass mirror	Smart leveling system for uneven floors Robust chassis and wheels Rotating back panel Dutch design Uni body structure column Strong locking mechanism Interchangeable logo panels	Highest presentation: 1590mm Lowest presentation: 514MM Vertical grid: 77mm Horizontal grid: 170mm
--	---	---

VARIATIONS:



**BKL.M.4X16-W (White)**  
**BKL.M.4X16-B (Black)**  
Security: Key-locked  
Capacity: 64 frames (2x32)  
Weight: 41 kg

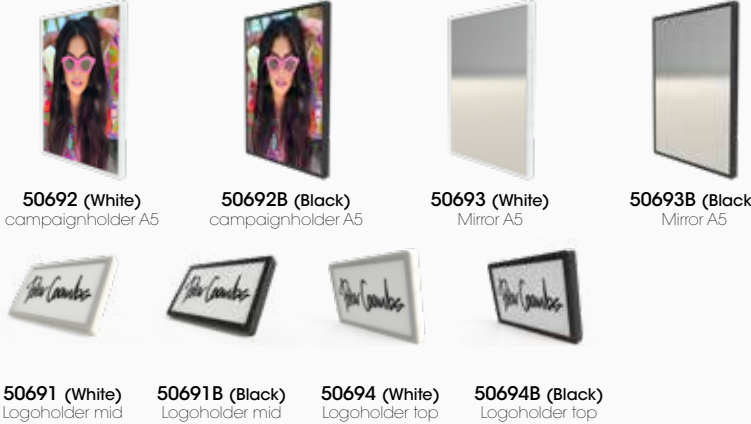


**BNL.M.4X16-W (White)**  
**BNL.M.4X16-B (Black)**  
Security: Non-locked  
Capacity: 64 frames (2x32)  
Weight: 41 kg

AVAILABLE COLOURS



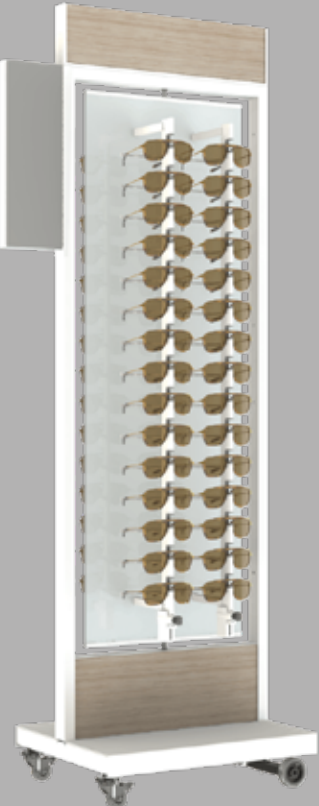
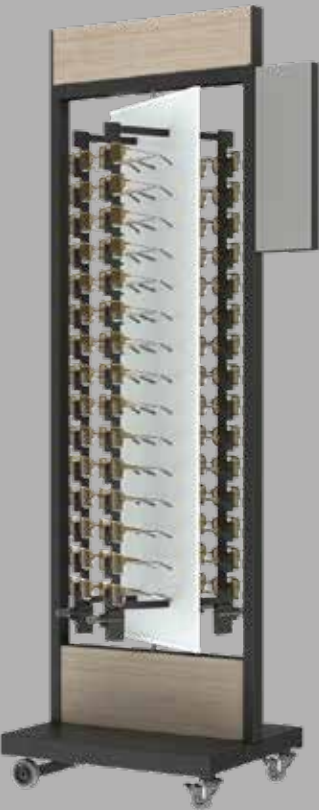
AVAILABLE ACCESSORIES



# BASALT

## FREESTANDING DISPLAY

NON- or KEY-LOCKED





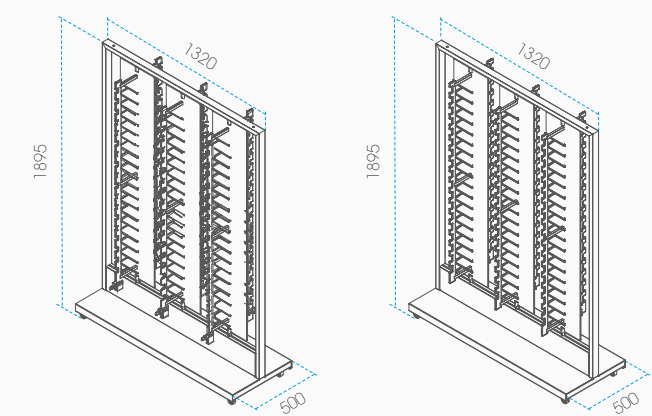


ANL 15R-W (White)  
ANL 15R-B (Black)  
Capacity: 108 frames (6x18)  
Weight: 66 kg

The Basalt XL is a double-sided freestanding display with a modern industrial look for high-traffic locations. This version features three revolving panels with two eyewear rods each, for a total capacity of 108 frames. This version is the ideal solution to quickly and easily create additional eyewear presentation capacity and can be placed in your shop window or as a room divider inside your optical store. While this unit is used inside the store, it is fitted with sturdy wheels to easily move it around, or with leveling feet, to give it a stable fixed position.

SPECIFICATIONS:	UNIQUE FEATURES:	DIMENSIONS:
Security: Non- or Key-locked Material: Steel chassis and base Aluminium rods, oak shield, acrylic back panel	Robust classic Leveling feet or wheels Rotating back panels Dutch design Uni body structure column Strong locking mechanism	Highest presentation: 1740mm Lowest presentation: 435mm Vertical grid: 77mm Horizontal grid: 385mm

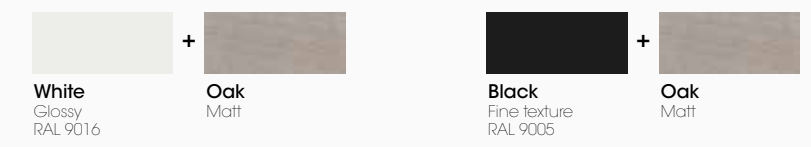
### VARIATIONS:



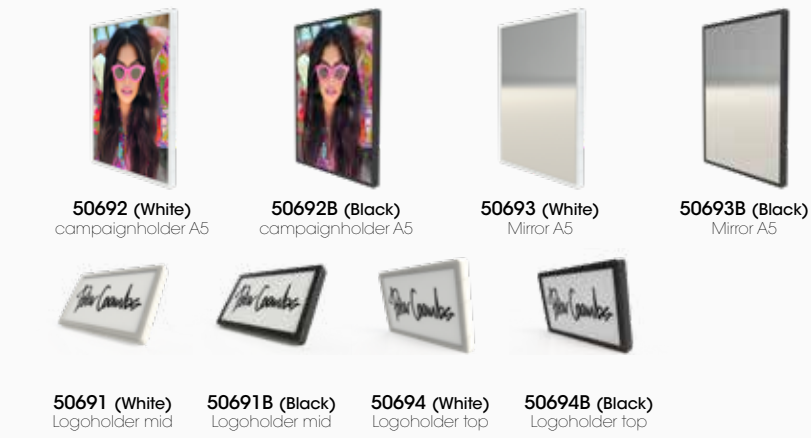
BKL XL 6X18-W (White)  
BKL XL 6X18-B (Black)  
Security: Key-locked  
Capacity: 108 frames (6x18)  
Weight: 66 kg

BNL XL 6X18-W (White)  
BNL XL 6X18-B (Black)  
Security: Non-locked  
Capacity: 108 frames (6x18)  
Weight: 66 kg

### AVAILABLE COLOURS



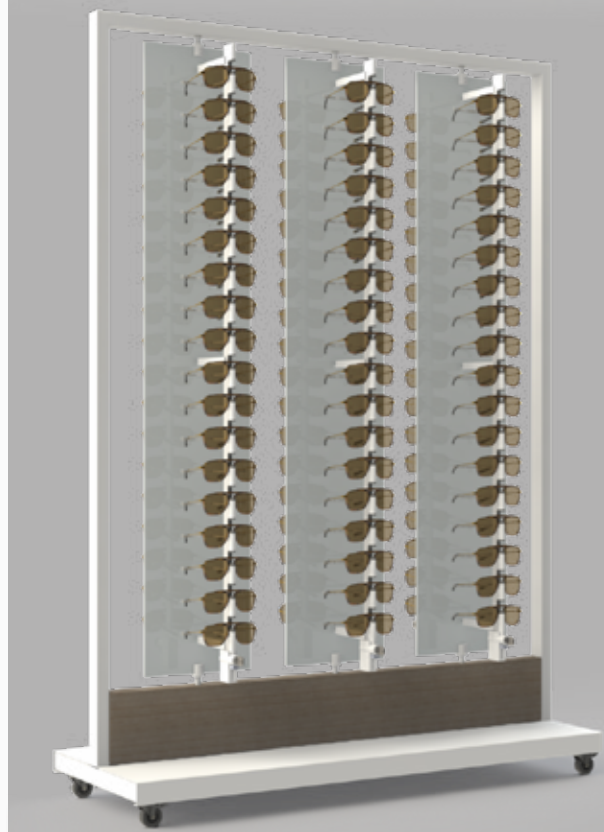
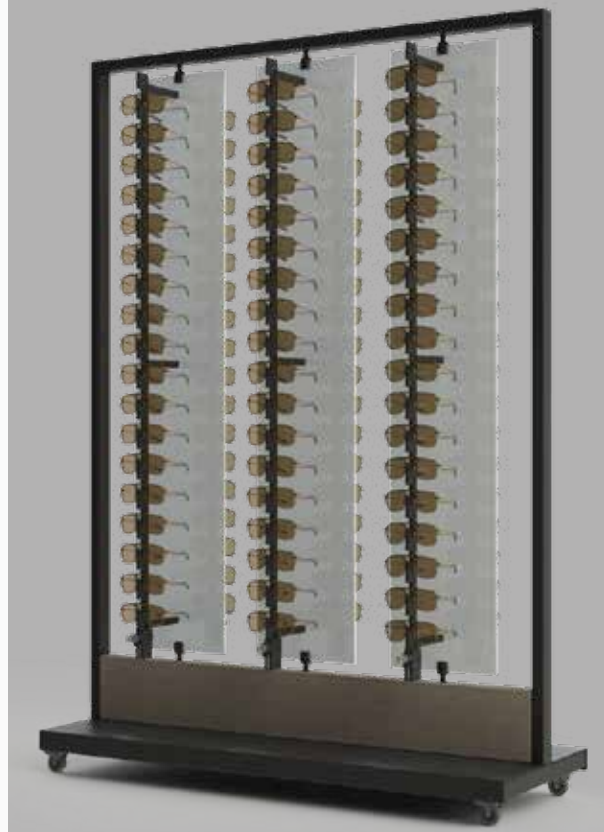
### AVAILABLE ACCESSORIES



# BASALT XL

## FREESTANDING DISPLAY

NON- or KEY-LOCKED







The Stilo range has an industrial, neutral design. These unsecured frame holders have a high-quality, seamless finish, allowing optimal presentation of frames and sunglasses.

The Stilo XS uses stainless steel temple support rods you can easily create long horizontal lines that create a clear overview over your collections. These subtitle, elegant frameholder focus all attention on your collection.



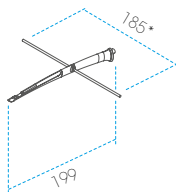
SPECIFICATIONS:

Security: Non-locked  
Material: Polycarbonate body  
soft rubber bridge support  
stainless steel rods.

UNIQUE FEATURES:

Dutch design.  
Connectable  
Double injection molded  
Stable frame positioning  
Hand-finished to perfection

VARIATIONS:

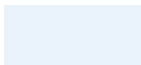


**SXS.25-W (White)**  
**SXS.25-T (Clear)**  
Capacity: Set of 25  
Weight: 0,5 kg

AVAILABLE COLOURS



**White**  
Glossy  
RAL 9016



**Clear**  
Glossy

TEMPLE SUPPORT RODS:



**50615 (White)**  
**50622 (Stainless)**  
2 positions (390mm)



**50616 (White)**  
**50623 (Stainless)**  
3 positions (570mm)



**50617 (White)**  
**50624 (Stainless)**  
4 positions (760mm)



**50618 (White)**  
**50625 (Stainless)**  
5 positions (950mm)



**50619 (White)**  
**50626 (Stainless)**  
6 positions (1140mm)

# STILO XS

## FRAME HOLDERS

### NON-LOCKED







The stilo range has an industrial, neutral design. These unsecured frame holders have a high-quality, seamless finish, allowing optimal presentation of frames and sunglasses.

Use the Stilo FD to create frame presentations in an exclusive way. Its functional design ensures a stable position of the frames and a solid and EASY ASSEMBLY (+/- 30 minutes). This version is also available with a magnet for mouting on metal objects or printed banners.



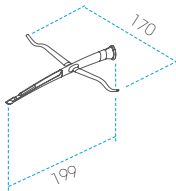
#### SPECIFICATIONS:

Security: Non-locked  
Material: Polycarbonate body  
soft rubber bridge support

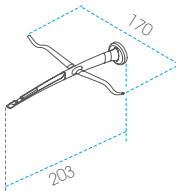
#### UNIQUE FEATURES:

Dutch design,  
Free positioning  
Double injection molded  
Stable frame positioning  
Hand-finished to perfection

#### VARIATIONS:



**SFD.10-W (White)**  
**SFD.10-T (Clear)**  
Capacity: Set of 10  
Weight: 0,36 kg

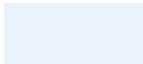


**SFDM.10-W (White)**  
**SFDM.10-T (Clear)**  
Capacity: Set of 10  
Weight: 0,57 kg

#### AVAILABLE COLOURS



**White**  
Glossy  
RAL 9016



**Clear**  
Glossy

# STILO FD

## FRAME HOLDERS

### NON-LOCKED







The stilo range has an industrial, neutral design. These unsecured frame holders have a high-quality, seamless finish, allowing optimal presentation of frames and sunglasses.

The 180 version of the Stilo optical frame holders are using the same connection rods as the XS version, but features a rotating mechanism that allows you to display your frames protruding directly on the wall, or hanging/standing on a shelf at a 90° angle.



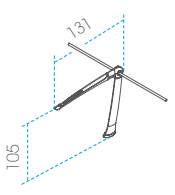
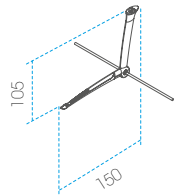
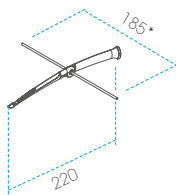
SPECIFICATIONS:

Security: Non-locked  
Material: Polycarbonate body soft rubber bridge support

UNIQUE FEATURES:

Dutch design,  
Hanging, standing or protruding  
Double injection molded  
Stable frame positioning  
Hand-finished to perfection

VARIATIONS:



**S180.25-W (White)**

Capacity: Set of 25  
Weight: 0,36 kg

AVAILABLE COLOURS



**White**

Glossy  
RAL 9016

TEMPLE SUPPORT RODS



**50615 (White)**  
**50622 (Stainless-steel)**  
2 positions (390mm)



**50616 (White)**  
**50623 (Stainless-steel)**  
3 positions (570mm)



**50617 (White)**  
**50624 (Stainless-steel)**  
4 positions (760mm)



**50618 (White)**  
**50625 (Stainless-steel)**  
5 positions (950mm)



**50619 (White)**  
**50626 (Stainless-steel)**  
6 positions (1140mm)

# STILO 180

## FRAME HOLDERS

### CONNECTABLE AND ROTATING







Carré Island units float in front of your customer as they browse your latest collections, offers and themes. The possibilities are endless as your floorspace hosts ever-changing configurations, pulling customers toward the island which acts as a focus point for sales optimization.

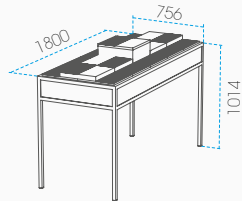
SPECIFICATIONS:

Security: Non-locked  
Material: Steel frame  
MDF table top  
Acrylic tableaus

UNIQUE FEATURES:

Flexible square models that can easily be interchanged to:  
- Highlight specific collections & themes  
- Trigger potential buyers to enter your store  
- Create impuls sales  
- Ensure aligned positioning

VARIATIONS:



**Carré CIU.10x4-W (White)**  
**Carré CIU.10x4-B (Black)**  
Capacity: 40 frames  
Weight: 81kg

AVAILABLE COLOURS



**Black**  
Fine structure  
RAL 9005



**Traffic white**  
Matt  
RAL 9016

Special colours on request

# CARRE

## ISLAND UNIT





